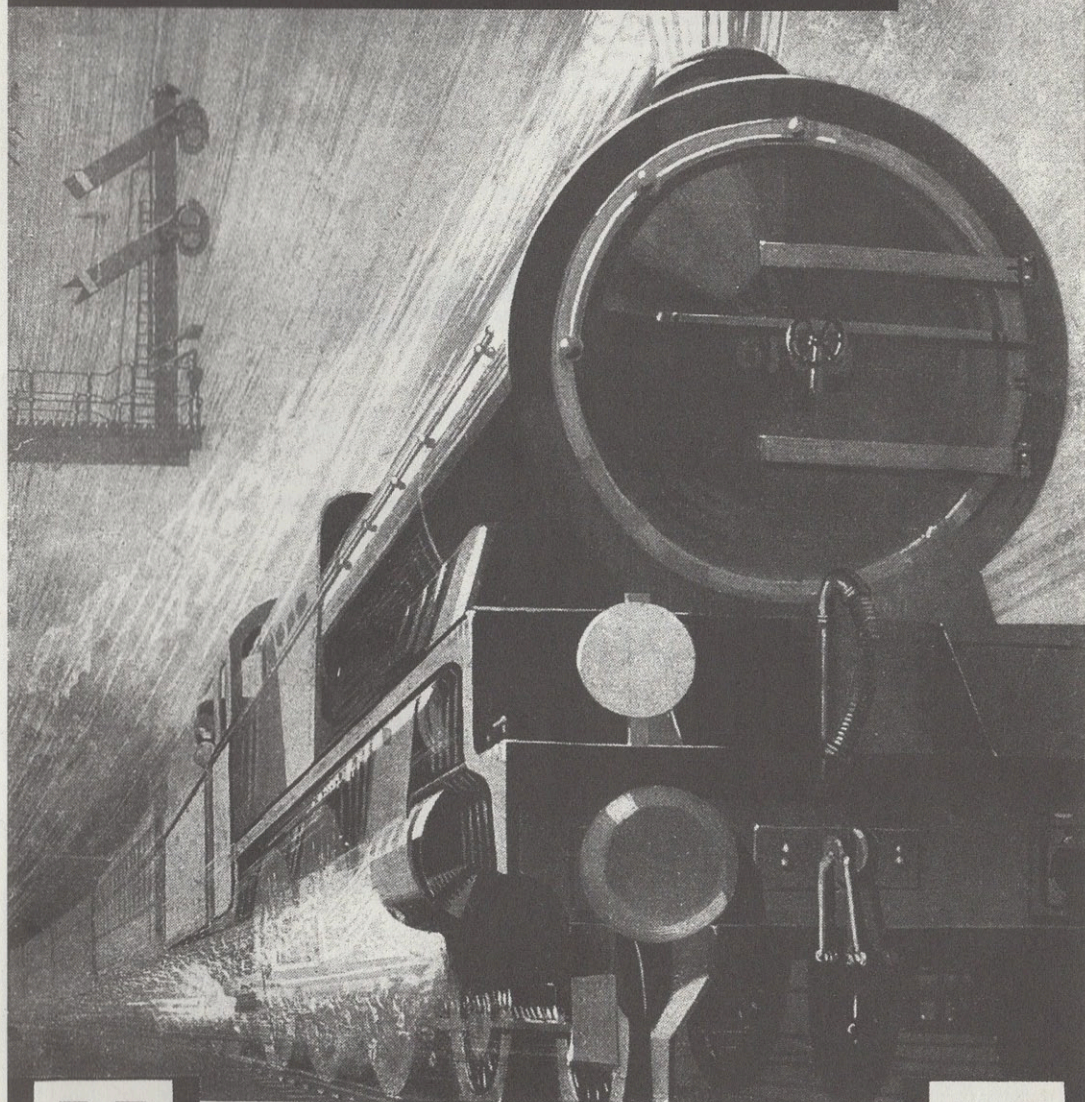
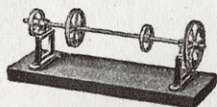


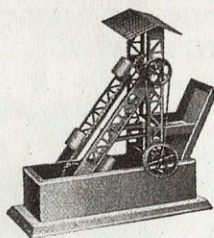
# 'BING' TOYS FOR ALL BOYS







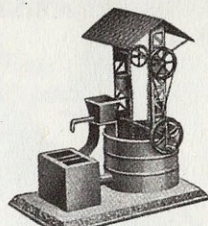
10/269



10/2118



10/2123

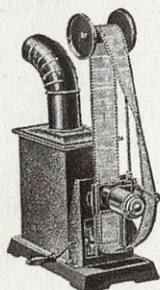


10/2119

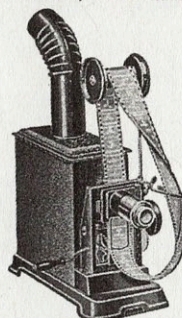
- 10/269 Shafting on finely polished wooden base with 4 changeable nickel plated pulleys,  $3\frac{1}{8}$  in. high,  $2\frac{3}{4}$  in. wide,  $7\frac{7}{8}$  in. long 4/-  
 10/2118 Dredger with 4 Buckets and double water chutes,  $9\frac{1}{2}$  in. high 4/9  
 10/2123 Windmill with Crushing Mill,  $17\frac{3}{4}$  in. high, 6 in. wide, 6 in. long 6/9  
 10/2119 Chain Pump with Water Dredger, 9 in. high,  $5\frac{1}{4}$  in. wide,  $8\frac{1}{4}$  in. long 6/3

## COMBINED CINEMATOGRAPHS AND MAGIC LANTERNS FOR OIL LIGHTING.

Complete with Condensor, Superior Lenses, Reflector, and Lamp.



10/857/2 1/2



10/858/3

- 10/857/2 1/2 with 1 film spool, 3 short films and 3 glass slides 11/6  
 10/858/3 with 1 film spool, 3 short films and 3 glass slides 14/6

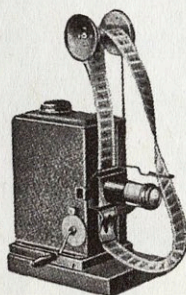
## COMBINED ELECTRIC CINEMATOGRAPHS AND MAGIC LANTERNS

to light from 4-volt Pocket Lamp Battery.

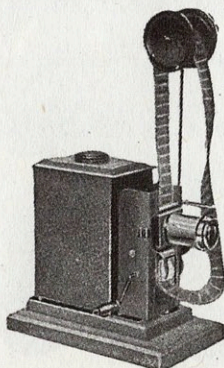
Large type as for oil fitted with New Bing Spot Light Lamps and Holders.

Easily connected with the Batteries.

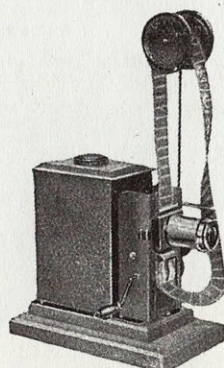
The Bulbs supplied with these Cinematographs are so powerful that ordinary Theatre Films can be used and give excellent results.



10/8122/3



10/8123/3



10/8124/3

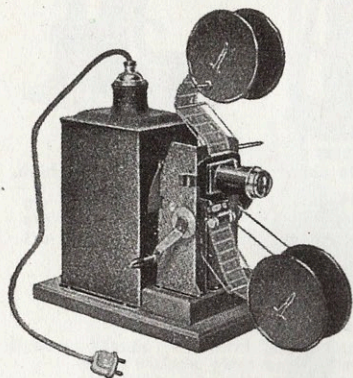
- 10/8122/3 with superior lenses, 1 film spool, 1 short-film and 3 glass slides 13/-  
 10/8123/3 with condensor and superior lenses, 1 film spool, 1 short film and 3 glass slides. The Mechanism is built outside the lantern 16/-  
 10/8124/3 with condensor and superior lenses, flywheel, 1 film spool, 3 short films and 6 glass slides. The Mechanism is built outside the lantern 22/6

Above prices are per piece.

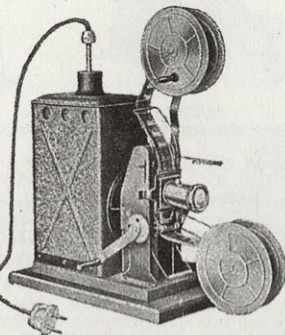


## COMBINED CINEMATOGRAPHS AND MAGIC LANTERNS FOR ELECTRIC LIGHTING.

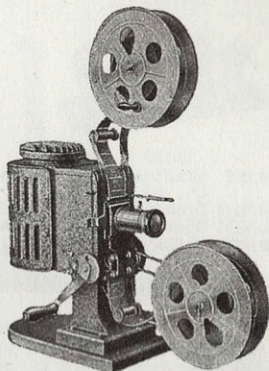
To light from House Current.



10/8125/3



10/8127/4

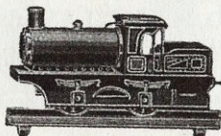


10/8128/4

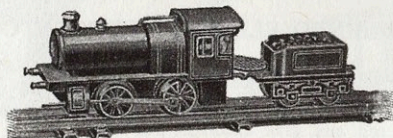
- 10/8125/3** first-class condensor and lenses, with two large removable spools, fitted to unwind and take up, shutter, heavy flywheel and electric adaptor with plug to connect with the house current. Complete with 3 long films and 12 glass slides . . . . . 40/—
- 10/8127/4** large size Cinema with two large spools fitted to unwind and take up. Best quality condensers and lenses, shutter, flywheel and electric adaptor with plug to connect with the house current. Complete with 3 long films and 12 glass slides . . . . . 60/—
- 10/8128/4** new type combined Cinema and Magic Lantern with finest quality condensor and lenses, easily focussed, with 2 large aluminium spools to unwind and take up. Vertical shutter, flywheel and insulated lamp house giving out the minimum of heat. Complete with lamp-holder, cable and plug. No glass slides or films are given with this lantern . . . . . 72/6

## STEAM LOCOMOTIVES

Gauge 0

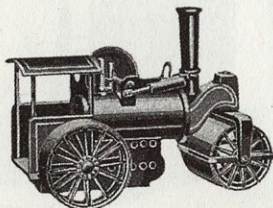


61/210/0



61/220/0

- 61/210/0** Steam Tank Loco, with oscillating brass cylinder, stamped frame, burnished brass boiler and safety valve,  $7\frac{1}{2}$  in. long . . . . . 9/—
- 61/220/0** Steam Loco with Tender, burnished brass boiler, oscillating brass cylinder and safety valve, with dummy cylinders and piston rods,  $10\frac{3}{4}$  in. long (including tender) . . . . . 13/6



10/136

- 10/136** Steam Road Roller. Very powerful model, with large oxidised boiler, oscillating cylinder, reversing gear, steam whistle, and safety valve. All fittings nickel plated. Length overall  $10\frac{1}{4}$  in. . . . . 21/—

Above prices are per piece.