

I. Supplement
to our
Special Catalogue

1906 Edition
of
Instructive Mechanical,
Optical and Electrical
== Toys. ==

Edition 1907.

BING BROTHERS, A.-G.
NUREMBERG (BAVARIA).



London Show Rooms:

== Milton House ==

8 & 9 Chiswell Street E. C.

About 3800 hands employed.

BING BROTHERS

A.-G.

SHOW ROOMS:

HAMBURG:
Neuerwall 38, II.

BERLIN SW.:
Ritterstrasse 79.

PARIS:
19 Rue Béranger.

NUREMBERG

[BAVARIA.]

LONDON: 8 & 9, Chiswell Street E. C.

SHOW ROOMS:

MILAN:
17 Via Foro Bonaparte.

AMSTERDAM:
Keizersgracht 37.

BARCELONA:
Pelayo 7.

Edition 1907.

I. Supplement

to our

SPECIAL CATALOGUE

1906 Edition

for

Instructive Mechanical, Optical
and Electrical Toys.



Important Price Reductions!

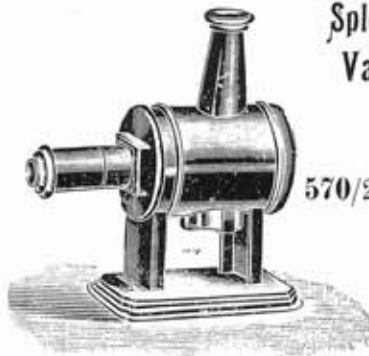
We are again in a position this year to make a **considerable reduction of prices** of a number of articles of our Main Catalogue of which kindly take note.

It might be advisable to make the alterations yourself in the “**Buyer’s Price List**” for our Main Catalogue which is already in your possession.

No.	Page	Article	Reduced Prices	No.	Page	Article	Reduced Prices
400/4	231	Magic Lantern	3/— each	13763/2	90	Motor Goods Van . .	5/— each
" /4 ¹ / ₂	231	" "	3/8 "	" /3	90	" " "	7/3 "
" /5	231	" "	5/— "	13961/1	187	Loco Shed	11/3 "
" /6	231	" "	6/3 "	14022/0	309	El. Rails	4/6 doz
" /7	231	" "	7/9 "	" /1	309	" "	5/1 "
" /8	231	" "	8/6 "	14023/0	309	" "	4/6 "
550/3 ¹ / ₂	231	" "	2/11 "	" /1	309	" "	5/1 "
" /4	231	" "	3/6 "	14028/0	309	" Points	3/5 each
" /4 ¹ / ₂	231	" "	4/3 "	" /1	309	" "	3/11 "
" /5	231	" "	5/3 "	14029/0	309	" "	3/5 "
" /6	231	" "	6/9 "	" /1	309	" "	3/11 "
1745/3	240	Cinemathograph . . .	4/3 "	14048	283	Geissler Tubes	—/11 "
1746/3 ¹ / ₂	240	" "	5/3 "	14050	283	" " Will be delivered in future with wooden base	2/3 "
1747/4	240	" "	7/11 "	14051	284	Radiometer	1/2 "
8743/1	27	Model	4/10 doz.	14052	284	" "	2/6 "
" /2	27	" "	4/10 "	14258	284	Geissler Tubes	1/10 "
" /3	27	" "	4/10 "	14260	284	" "	2/6 "
" /4	27	" "	4/10 "	14261	283	" "	1/6 "
" /5	27	" "	4/10 "	14262	283	" "	1/6 "
" /6	27	" "	4/10 "	14342/0	308	Rails	2/7 doz.
" /7	27	" "	4/10 "	" /1	308	" "	3/1 "
" /8	27	" "	4/10 "	14343/0	308	" "	2/7 "
8790/0	208	Stop Ends	8/5 "	" /1	308	" "	3/1 "
9693/0	212	Crossing	9/3 "	14344/0	308	" "	3/1 "
9702/1	213	Street Lamp	8/5 "	" /1	308	" "	3/8 "
13377/8	283	Geissler Tubes	3/11 "	14345/0	308	" "	3/1 "
" /9	283	" "	3/11 "	" /1	308	" "	3/8 "
" /10	283	" "	4/7 "	14359	284	Geissler Tubes with wooden base . . .	1/10 each
" /12	283	" "	5/1 "	14360	284	Geissler Tubes . . .	1/6 "
13378/8	283	" "	6/— "	14362	284	" "	3/— "
" /12	283	" "	7/10 "	14364/10	283	" "	1/— "
" /18	283	" "	9/8 "	" /12	283	" "	1/2 "
13379/8	283	" "	7/3 "	" /16	283	" "	1/3 "
" /10	283	" "	7/10 "	28389/0	183	Curved Slope . . .	5/1 "
" /13	283	" "	8/5 "	" /1	183	" "	7/3 "
" /17	283	" "	9/8 "	28390/0	183	Straight "	5/1 "
13876/1	85	Motor Car	8/5 "	" /1	183	" "	7/3 "
13763/1	90	Motor Goods Van . .	2/10 each				

NOTE: For important Reductions in Electric Railways please refer to pages 346–349 of this supplement.

Magic Lanterns.

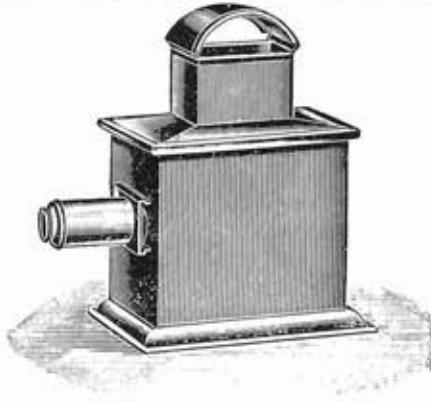


*Splendid
Value!*

570/2 1/2

570/2 1/2 Magic Lantern

nicely finished, with oil lamp, 3 glass slides, packed in cardboard box
width of glass slides 1 in., diam. of lense 3/4 in. doz. 9/8



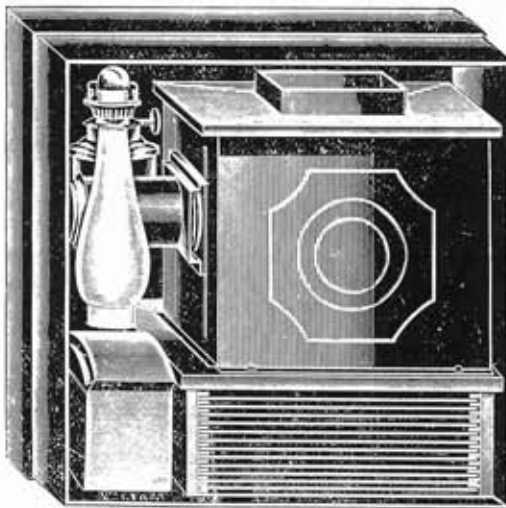
300 and 330/3

Prices reduced!

Magic Lantern "Aladin"

tin iron japanned, on tin socle, with oil lamp,
packed in cardboard box

300/2 1/2 width of glass slides 1 in., diam. of lense 3/4 in.,
with 6 fine glass slides doz. 16/10
" /3 width of glass slides 1 1/8 in., diam. of lense 1 in.,
with 12 fine glass slides " 28/—

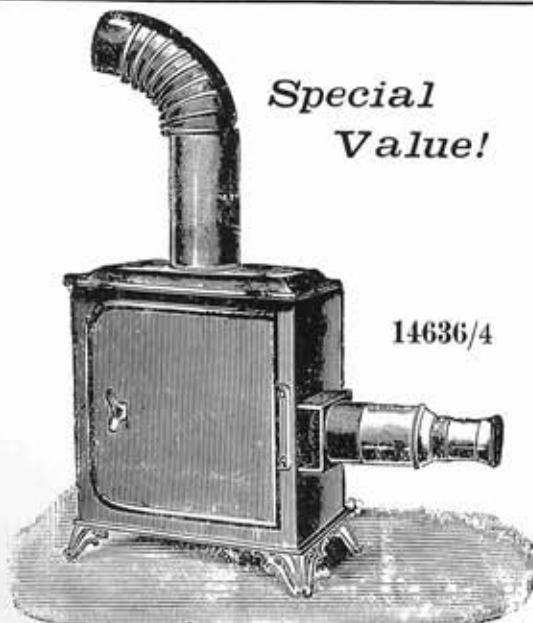


330/7

Magic Lantern "Pharus"

tin iron japanned, with petroleum lamp and 12 fine glass slides, packed in
strong cardboard box (sizes 4 to 8 slides in separate grooved box)

		width of glass slides	width of wood pict.	diam. of lens		
330/3	on tin socle	1 1/8 in.	—	1 in.	each	2/8
" /3 1/2	" " "	1 1/2 "	1 1/8 in.	1 1/8 "	"	3/8
" /4	" " "	1 5/8 "	1 3/8 "	1 3/8 "	"	5/2
" /4 1/2	wooden "	1 3/4 "	1 9/16 "	1 9/16 "	"	6/6
" /5	" " "	2 "	1 3/4 "	1 3/4 "	"	8/—
" /6	" " "	2 3/8 "	2 "	2 "	"	9/10
" /7	" " "	2 3/4 "	2 1/8 "	2 1/8 "	"	13/8
" /8	" " "	3 1/4 "	2 3/8 "	2 3/8 "	"	17/6



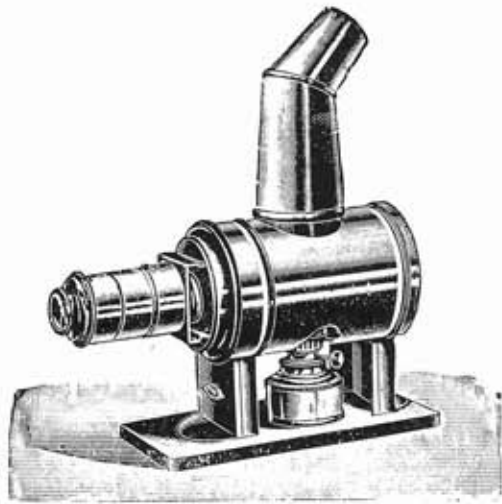
*Special
Value!*

14636/4

Magic Lantern

of blue Russian Iron with petroleum lamp, packed in strong
cardboard box

14636/1 width of glass slides 1 1/4 in., diam. of lense 1 in., with
3 glass slides. doz. 16/10
" /2 width of glass slides 1 1/4 in., diam. of lense 1 in., with
6 glass slides (larger) doz. 26/—
" /3 width of glass slides 1 1/4 in., diam. of lense 1 1/4 in.,
with 12 glass slides (in separate grooved box) doz. 36/—
" /4 width of glass slides 1 3/8 in., diam. of lense 1 1/4 in.,
with 12 glass slides (in separate grooved box) doz. 54/—

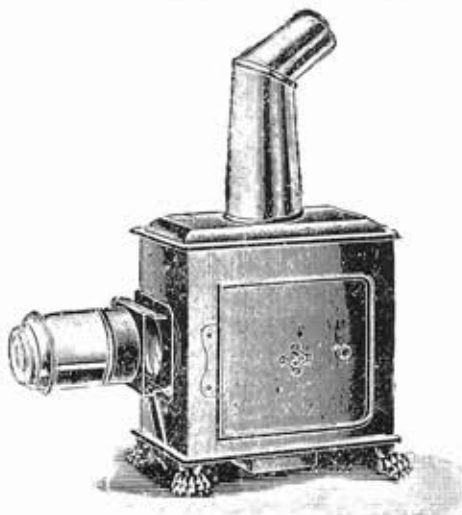


200

*Prices reduced!***Magic Lantern "Eos"**

finely japanned, red or black, with petroleum lamp and 12 fine glass slides (in separate grooved box), packed in elegant cardboard box

	width of glass slides	width of wood pictures	diam. of lens		
200/3	1 ¹ / ₈ in.	—	1 in.	each	3/4
" /3 ¹ / ₂	1 ¹ / ₂ "	1 ¹ / ₈ in.	1 ¹ / ₈ "	"	4/2
" /4	1 ⁵ / ₈ "	1 ³ / ₈ "	1 ³ / ₈ "	"	5/10
" /4 ¹ / ₂	1 ³ / ₄ "	1 ⁹ / ₁₆ "	1 ⁹ / ₁₆ "	"	6/10
" /5	2 "	1 ³ / ₄ "	1 ³ / ₄ "	"	8/2
" /6	2 ³ / ₈ "	2 "	2 "	"	10/2
" /7	2 ³ / ₄ "	2 ¹ / ₄ "	2 ¹ / ₈ "	"	12/2
" /8	3 ¹ / ₄ "	2 ³ / ₄ "	2 ³ / ₈ "	"	14/8

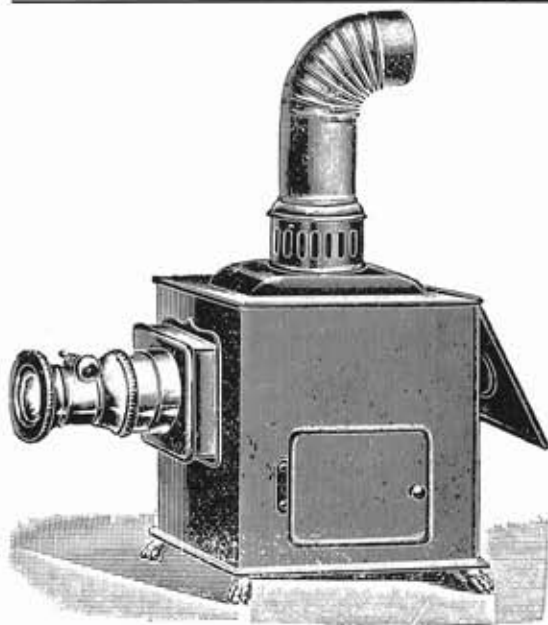


920

*New, very good value!***Superfine Magic Lantern "Primera"**

polished Russian iron, with petroleum lamp and 12 fine glass slides (in separate grooved box), packed in elegant cardboard box

	width of slides	width of wood pictures	diam. of lens		
920/3 ¹ / ₂	1 ¹ / ₂ in.	1 ¹ / ₈ in.	1 ¹ / ₈ in.	each	4/—
" /4	1 ⁵ / ₈ "	1 ³ / ₈ "	1 ³ / ₈ "	"	5/4
" /4 ¹ / ₂	1 ³ / ₄ "	1 ⁹ / ₁₆ "	1 ⁹ / ₁₆ "	"	6/—
" /5	2 "	1 ³ / ₄ "	1 ³ / ₄ "	"	8/—
" /6	2 ³ / ₈ "	2 "	2 "	"	10/2
" /7	2 ³ / ₄ "	2 ¹ / ₄ "	2 ¹ / ₈ "	"	12/2
" /8	3 ¹ / ₄ "	2 ³ / ₄ "	2 ³ / ₈ "	"	14/—



1275

*With cog wheel.***Superfine Magic Lantern "Eden"**

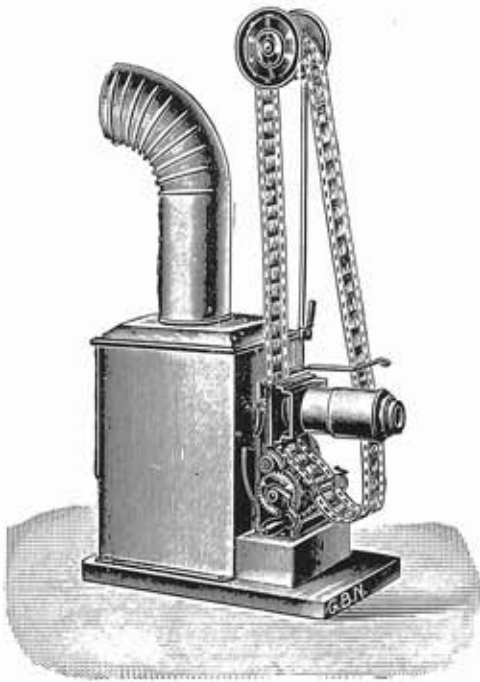
polished Russian iron, with fine brass objective, with cog wheel, double condensator, duplex burner, 12 fine covered glass slides, 1 chromotrope, 1 conical moving picture and 1 moving landscape, packed in elegant cardboard box.

	width of glass slides	width of wood pictures	diam. of lens		
1275/5	2 in.	2 in.	1 ³ / ₄ in.	each	22/10
" /6	2 ³ / ₈ "	2 ³ / ₈ "	2 "	"	28/6
" /7	3 "	3 "	2 ¹ / ₈ "	"	33/8
" /8	3 ¹ / ₈ "	3 ¹ / ₈ "	2 ³ / ₈ "	"	41/2
" /9	3 ¹ / ₂ "	3 ¹ / ₂ "	2 ¹ / ₂ "	"	49/10



New Cinematographs

also to be used as **Magic Lanterns** with excellent optical effect, strong reliable film transporters, for all films with Edison perforation.



1709/3 1/2

Special value!

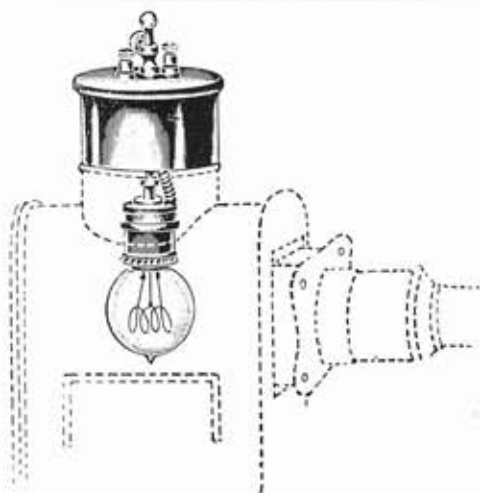
Camera made of strong tin plate, finely japanned, imitation Russian iron, objective finely nickelled, with condensator and 2 finely cut objective lenses; packed in elegant box.

- 1709/3 1/2** for glass slides of 1 3/8 in. width and wood pictures of 1 1/4 in. width, with 6 glass slides, **3 coloured films**, 3" burner and reflector each 10/6
- 1709/4** for glass slides of 1 5/8 in. width and wood pictures of 1 3/8 in. width, with 12 glass slides, **6 large coloured films**, 5" burner and reflector 21/—

☞ *For cheaper and better class Cinematographs refer to pages 240—243 of our Main Catalogue.* ☞

Our Cinematographs can be transformed into and used as Magic Lanterns instantly; this change can take place even during a performance and without disturbance.

Prices and lists of pictures of films see page 339 and 340 of this suppl^t, also page 245 of Main Catalogue.

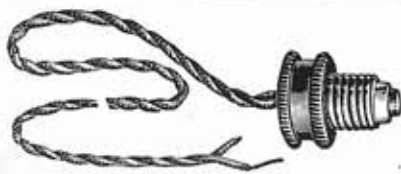


14450

14450 Electric Lighting

for projecting purposes adjustable, highly finished.
fitting Magic Lanterns 330/4—8, 950/5—8, 1000/5—8, 1100/5—8, 600/5—9, 1150/4 1/2—9, 1275/5—10, 1370/5—9, 3000/9, 3200/11, 3400/11, 2000/8—9 and Cinematographs 1748/4 1/2, 1749/5, 1752, 1750, 1751, 1753/7, 1650 and 1700/5.
8 1/4 in. high, 4 in. diam. each (without globe) 5/4

13788 Special incandescent globes (so-called Focus-incandescent lamps) extremely suitable for projecting purposes, fitting above Electric lighting each 2/2



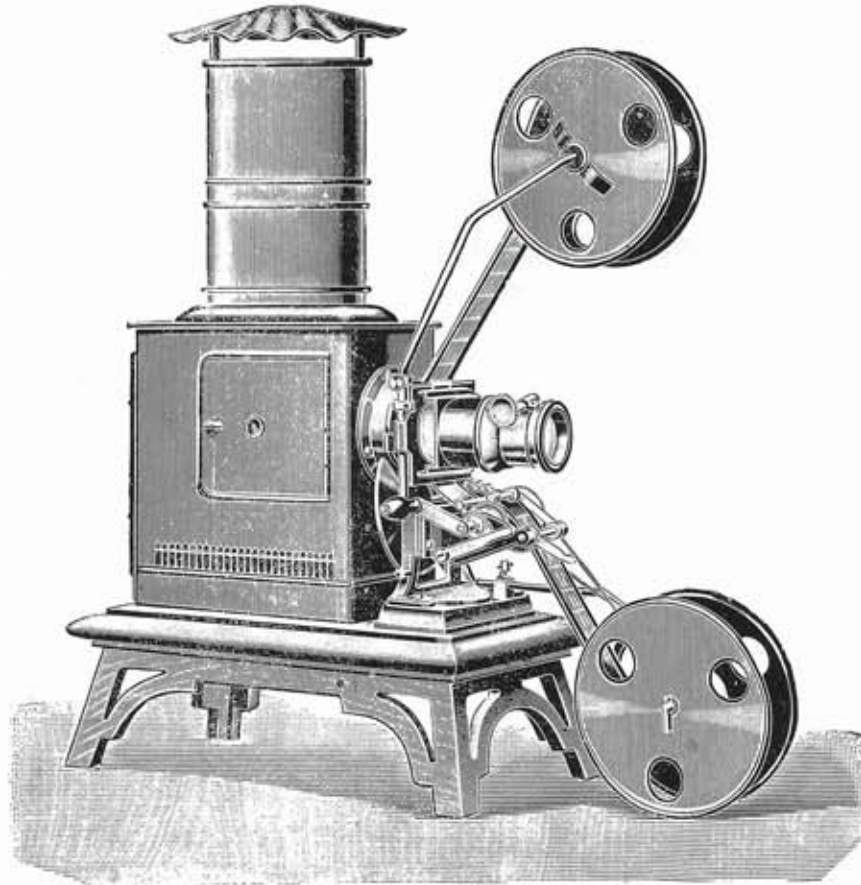
14056

14056 Connecting Cable

fitting above Electric lighting with 2 1/4 yards of conducting wire and screw contact for standard Edison thread each 5/4



Cinematograph.



1753

Extra fine Cinematograph,

can also be used as Magic Lantern, taking all films with "Edison Perforation", arranged for the projection of glass slides of $2\frac{3}{8}$ in. width or wood pictures of $2\frac{3}{8}$ in. width, with film transporters, almost noiselessly working, with 6 coloured films, 3 fine original photo films, and 12 fine double covered glass slides, $2\frac{3}{4}$ in. wide. Camera made of strong polished Russian iron, on polished wood pedestal, with fine brass objectives, adjustable cogwheel, with double condensator and 2 finely cut objective lenses. Packed in elegant wood box.

1753	with device for petroleum light (10" duplex burner)	complete	each	124/—
1754	" " incandescent gas light	"	"	130/—
1755	" " electric light	"	"	137/—

Our Cinematographs can be transformed into and used as Magic Lanterns instantly; this change can take place even during a performance and without disturbance.

Prices and lists of pictures of films see page 339 and 340 of this Supplement, also page 245 in our Main Catalogue.

Films.

6665	"Photobing" Films	doz.	18/—
6666	Short Coloured Films per doz. series (1 serie = 3 strips)	doz. series	16/10
6663	Black lithographed Films, " "	" "	14/6

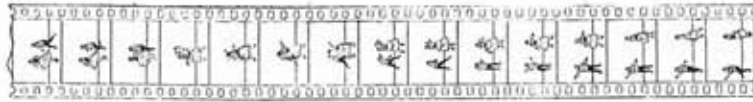
3 new Series, for particulars see page 339.



Films

(Picture strips for Cinematographs)

with Edison perforation, fitting all Cinematographs.



6663 Black lithographed Films

Black films 22 in. long, with "Edison Perforation" (1 serie = 3 strips) per doz. series 14/6

Series I containing: Dancer and Lady Dancer Comical Actor Conjurer	Series II containing: Boxer Performing Dogs Gymnast	Series III containing: Child with Cat Lady Conjurer with Pigeon Lady Dancer	Series IV containing: Cuirassier Wrestler Rope Dancer	Series V containing: Conjurer and Lady Children with Cat Street Scenes
--	---	---	---	--

6666 Fine Coloured Films

Coloured films 22 in. long, with "Edison Perforation" (1 serie = 3 strips) per doz. series 16/10

Series I containing: Boxer Performing Dogs Gymnast	Series II containing: Child and Cat Conjurer and Pigeon Lady Dancer	Series III containing: Cuirassier Wrestler Rope Dancer	Series IV containing: Conjurer and Lady Child with Cat Street Scenes	Series V containing: Pierette Clowns Woodcutters
--	---	--	--	--

6638 Extra long fine Coloured Films

abt 39 in. long, with "Edison Perforation" (1 serie = 6 strips) per serie 6/—

Series I contains: Rope Dancer Scater Cyclist Cuirassier Cab Wrestler	Series II contains: Performing Dogs Gymnast Lady Conjurer Serpentine Dancer Clowns Dancing Girl	Series III contains: Conjurer Pierette Child with cat Boxer Bathing Boys Boys on the water	Series IV contains: Children with cat Scater Corso Man o' War sailing Cutting down trees Street Scenes
--	--	---	---

6665 The new "Photobing" Films

(name registered)

directly produced from original photographs, about 39 in. long, finely finished, with "Edison Perforation"
doz. 18/—

List of "Photobing" films

1. Fine Tobacco	9. The Wandering Singer	17. The Jump
2. Mimic	10. Pantomime	18. Happy alone
3. Hunger is the best cook	11. Hard Work	19. Jumping Artist
4. Quiet drink	12. The living wheelbarrow	20. Interesting Conjuring Performance
5. In the Joiner's workshop	13. The rehearsal	21. Dancing Artist
6. Smoke Artist	14. Industrious Cooper	22. Acrobats
7. Mandolin Player	15. The merry Clowns	23. Training
8. The man with collapsible head	16. Marionette Clown	24. Somersault

6627 Extra long, fine, coloured Films

from about 15—40 meter length, with Edison Perforation per meter 3/—

1. Dog and Street Sprinkler (very amusing) abt. 17 meter long		Series of 5 Marine Films each about 16 m long.
2. Cavalry Parade	18 " "	11. Torpedo Attack
3. A merry Story (very comical)	18 " "	12. Attack and Explosion of a Ship
4. Policeman and Duck Thief (very amusing)	19 " "	13. Battle at Sea
5. Street Sprinkler in trouble (very comical)	20 " "	14. Bombardment of a Town
6. Motor Car Corso	22 " "	15. Town on Fire.
7. Rescue of the Shipwreck	26 " "	
8. The excited Photographer	27 " "	
9. Protected Cruiser, in battle	31 " "	
10. Carneval Procession	40 " "	



6639 Original Photo Films (original photos)

about 39 in. long, finely finished with Edison Perforation (price reduced) each 3/4

List of pictures for Photographic films 6639 abt. 39 in. long.

6639/1 The merry Dwarf	6639/18 Cavalry Parade	6639/45 Cavalry Attack and Balloon
" /2 Clown as Conjurer	" /19 Infantry on the march	" /46 Bathing horses
" /4 Quick dress changer	" /21 Cavalry clearing obstacles	" /47 A Soldier's joke
" /5 Acrobats	" /37 Sailing boat	" /48 The Illusionist
" /7 In the Lion's cage	" /38 A boat on the Seine	" /49 Motorcar Flower Corso
" /8 In the swimming Bath	" /39 Asparagus Eating	" /50 Funny Story
" /9 H. M. de Czar	" /40 Oyster Eating	" /51 Faun and Bacchante
" /11 Gymnast on the horizontal bar	" /41 The rope jumper	" /52 The Caoutchoueman
" /12 Passing of a Warship	" /42 The Ostrich's Egg	" /53 Turnip Harvest
" /16 Spanish Dance	" /43 The Drinker and the Doll	" /54 Hound's meet
	" /44 Cavalry Attack	

The missing numbers are not delivered any more.

6664 Original Photo Films

abt. 5 1/2 yards long, finely finished, with Edison Perforation (price reduced) each 16/—

List of Photo Films 6664 of 5 1/2 yards length.

1. Street Cleaner and Dog	5. Battle with Cushions	9. Fisher on the Beach
2. Dance in Morocco	6. Mountain Railway in Territet	10. Boat on the Seine
3. Swimming Bath	7. Cavalry	11. Children's Dance.
4. Aquarium	8. Carriage Corso	12. Football

6681 Photo Films

abt. 11 yards long, finely finished with Edison Perforation (reduced in price) each 30/—

List of Photographic Films 6681 of abt. 11 yards length.

1. Arrival of a Train	5. Flower Corso	9. Tourbillon Dance
2. Dance in Morocco	6. Gymnast	10. Fox Hunt
3. Swimming Bath	7. Man o'War	11. After Church
4. A London Street	8. Street Life	12. Comical Clown and Lady

☞ These collections will be enlarged continuously. ☜

Above films fitting all our cinematographs.

===== NOTE: Films can neither be taken back nor exchanged. =====

For other photographic films refer to our Main Catalogue page 245.

New Serie of long Glass Slides for Magic Lanterns

finely finished, with striking effect of colour and humorous scenes, containing children scenes, comical and animal pictures etc.



6950 slide 6



6950 slide 11

size	3	3 1/2	4	4 1/2	5
pictures	1 3/16	1 3/8	1 9/16	1 3/4	2
	4 1/4	5	6	7	7 1/4

	6	7	8	9	10	11
	2 3/8	2 3/4	3 3/16	3 1/2	4	4 3/8
	8	8 3/4	9 1/2	11	12	12 in. wide

6950 without cover glass per doz. 9/8 13/2 16/8 21/6 28/4 each 3/6 4/2 5/4 7/4 9/6 11/—

6951 with cover glass . . each — — 2/2 3/— 3/8 4/10 6/— 7/4 9/8 13/2 15/—

